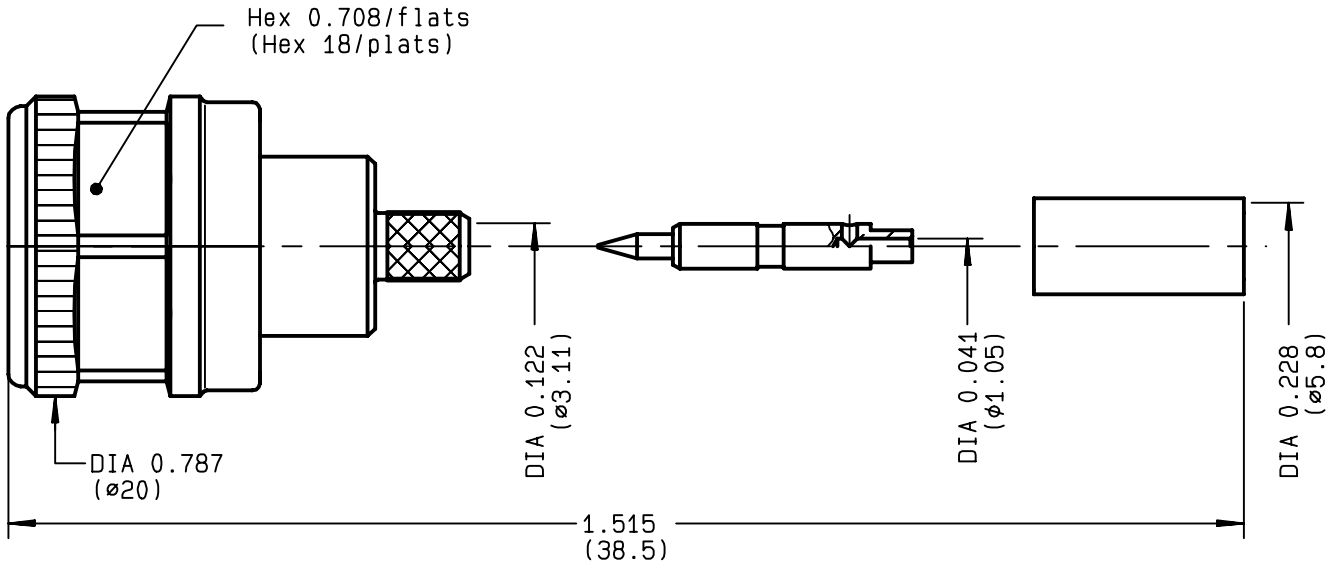


**STRAIGHT PLUG CRIMP TYPE
CABLE 5/50 D**

R161.083.117
SERIES N



NOMINAL IMPEDANCE	50 Ω
FREQUENCY RANGE	0-11 GHz
TEMPERATURE RATING	-55/+155 °C
V.S.W.R	1.15* + x F(GHz)Maxi
RF INSERTION LOSS	0.048 √F(GHz) dB Maxi
VOLTAGE RATING	850 Veff Maxi
DIELECTRIC WITHSTANDING VOLTAGE	1500 Veff Mini
INSULATION RESISTANCE	5000 MΩMini
HERMETIC SEAL	NA Atm.cm ³ /s
LEAKAGE (pressurized only)	NA
MECHANICAL DURABILITY	500 Cycles
WEIGHT	24.8 gr
SPECIFICATION	* 0-2 GHz

CABLES :	KX 23
	RG 142
	RG 142 FTX
	RG 223
	RG 400
OTHERS CHARACTERISTICS	
	PIM3 < -155 dBc (-112 dBm) 2x20w
CABLE RETENTION	200 N Mini
CENTER CONTACT RETENTION	
Axial force - mating end	27 N Mini
Axial force - opposite end	27 N Mini
Torque	NA cm.N Mini
RECOMMENDED TORQUES	
Mating	170 cm.N
Panel nut	NA cm.N
Clamp nut	NA cm.N

CONNECTOR PARTS	MATERIALS	FINISH	(all values are given in micrometers)
BODY	BRASS	BBR 0.5 OVER SILVER 3	
OUTER CONTACT	BRASS	BBR 0.5 OVER SILVER 3	
CENTER CONTACT	BRASS	GOLD 2.5 OVER COPPER 2.5	
INSULATOR	PTFE	-	
GASKET	SILICONE RUBBER	-	
OTHERS PIECES	BRASS	BBR 0.5 OVER SILVER 3	

ISSUE	CREATION DATE	FILE PART-NUMBER
9817D00	07/12/1993	EPC 96-07



RADIALL®

GAUTIER

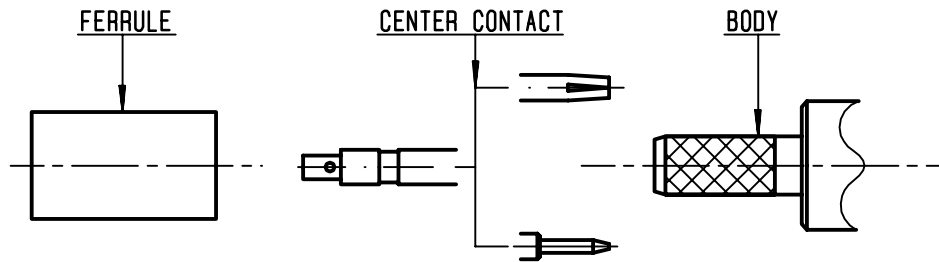
The information given here is subject to change without notice.
Design changes may be in order to improve the product .

Connect to the future



R161.083.117

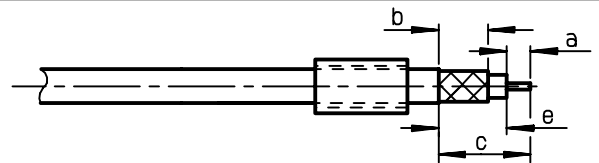
ISSUE **9817D00** SERIES **N**



①

Slide the ferrule onto the cable .
Strip the cable .

-
-
-

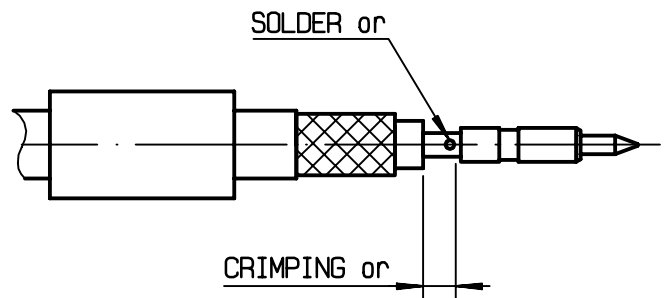


Stripping	a	b	c	d	e
inch	0.177	0.315	0.551	0	0.374
mm	4.5	8	14		9.5

②

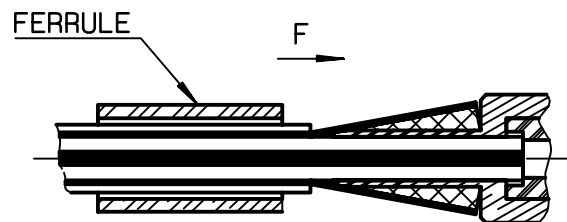
Slide on center contact until it bottoms against cable dielectrique .
Solder or crimp center contact .
Crimping tool :R282 223 000 (hex: .068)
or R282 293 000 (M22520/5-01) +
dies R282 235 011 (M22520/5-11)
(We advice to solder center contact
to improve electrical performances)

-



③

Fan the braid.
Slide cable into the body until bottoms against insulator .
Slide ferrule over the braid .
(In direction F)



④

Crimp the ferrule with crimping tool
R282 223 000 (hex: .213) or
crimping tool R282 293 000 (M22520/5-01)
+ dies R282 235 011 (M22520/5-11)
Cut the excess of braid .
Slide sleeve over ferrule
in place .

-

